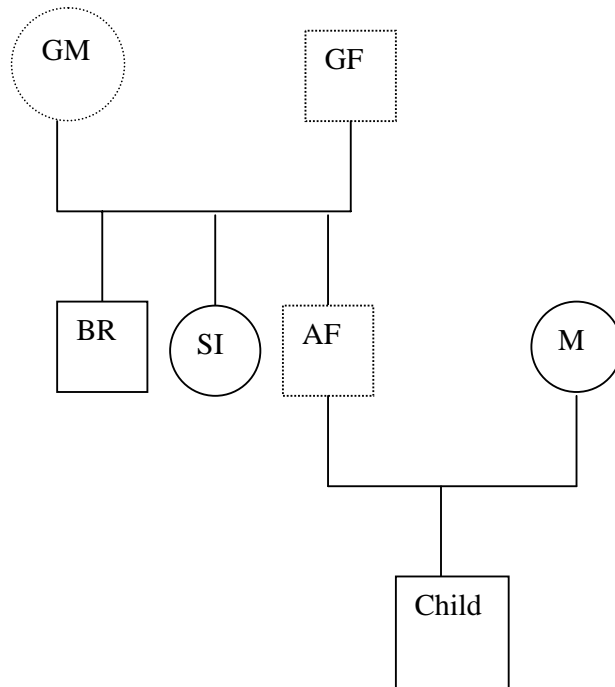


PAPER CHALLENGE

In order to compare statistic calculations among the laboratories, you are encouraged to do this paper challenge.



The question is whether Child is the child of AF.
GM, GF and AF are deceased. BR, SI, M and Child are investigated.

You are encouraged to use the online version of the questionnaire and paper challenge to fill in your results.

The address will be: <http://www.ptw-eswg.forensic.ku.dk>



Paternity Testing Workshop of the English Speaking Working Group of the ISFG 2004

The frequency of each allele is given as no. of observed alleles. The total no. of observed alleles was 724 for each autosomal system. The total no. of observed haplotypes was 170 for the Y-STRs.

In a separate sheet, please indicate how frequencies are calculated, specify the formulas used for calculations, and report the PI-value (or similar) calculated for each system.

Autosomal STRs	M	Child	SI	BR	Observed alleles autosomal systems: total no. of observed alleles= 724	Mutation freq.
D8S1179	14	14	12, 13	12, 14	12 : 103, 13 : 261, 14 : 143, 0 : 0	0.0030
D21S11	31, 32	31, 32	30, 31	31, 32	30 : 158, 31 : 80, 32 : 13	0.0030
D7S820	8, 12	8, 12	11, 12	11, 12	8 : 98, 11 : 155, 12 : 105	0.0030
CSF1PO	10, 11	10, 11	11, 12	10, 11	10 : 189, 11 : 237, 12 : 221	0.0030
D3S1358	17, 18	15, 17	15, 18	15, 16	15 : 210, 16 : 155, 17 : 167, 18 : 100	0.0030
TH01	6, 7	6, 8	8, 9.3	9.3	6 : 157, 7 : 122, 8 : 85, 9.3 : 252, 0 : 0	0.0030
D13S317	12	12	11, 12	12, 13	11 : 222, 12 : 205, 13 : 79, 0 : 0	0.0030
D16S539	11	8, 11	8, 9	8, 9	8 : 9, 9 : 106, 11 : 212, 0 : 0	0.0030
D2S1338	19, 20	17, 20	19, 20	19, 20	17 : 155, 19 : 81, 20 : 118	0.0030
D19S433	13, 16	12, 13	13, 14	12, 15	12 : 45, 13 : 137, 14 : 287, 15 : 125, 16 : 45	0.0030
VWA	16, 17	15, 16	14, 15	15, 17	14 : 63, 15 : 68, 16 : 167, 17 : 193	0.0040
TPOX	8	8, 11	8, 11	8	8 : 416, 11 : 178, 0 : 0	0.0030
D18S51	16, 17	17, 22	16, 18	12, 22	12 : 86, 16 : 91, 17 : 97, 18 : 57, 22 : 5	0.0030
D5S818	9, 11	11	8, 10	9, 10	8 : 2, 9 : 29, 10 : 47, 11 : 270, 0 : 0	0.0030
FIBRA/FGA	23	21, 23	21, 22	21, 23	21 : 112, 22 : 125, 23 : 122, 0 : 0	0.0030
Y-chromosomal STRs					Observed haplotypes Y-chromosomal systems: total no. of observed haplotypes = 170	
DYS19		16		16	Haplotypes: 16, 11, 15, 13, 29, 24, 11, 11, 13, 11, 11 : 1 16, 11, 15, 13, 29, 25, 11, 11, 13, 11, 11 : 0	0.0030
DYS385		11, 15		11, 15		0.0030
DYS389I		13		13		0.0030
DYS389II		29		29		0.0050
DYS390		24		25		0.0090
DYS391		11		11		0.0050
DYS392		11		11		0.0030
DYS393		13		13		0.0030
DYS438		11		11		0.0030
DYS439		11		11		0.0030

Conclusion:

PI: _____

The results are in favour of paternity

The results are inconclusive. Additional testing is recommended

The results are against paternity

Other: _____

